

Central Bank Center

— COMING 2022 —





Central Bank Center

STORIED HISTORY. BRIGHT FUTURE.

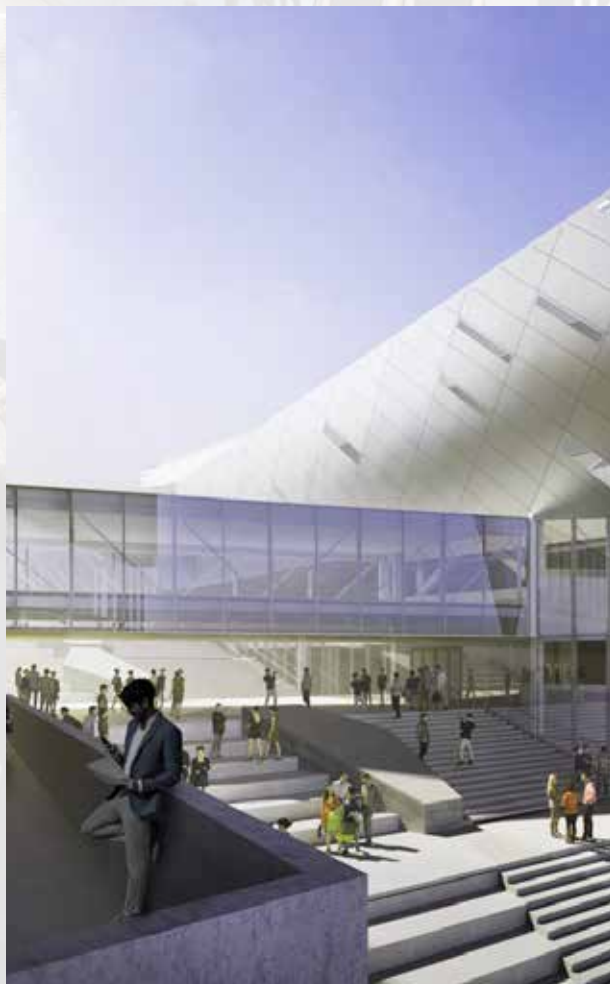
Central Bank Center is one of the nation's most storied entertainment destinations. To preserve its unique history and ensure its relevance for generations to come, a design team comprised of NBBJ in Los Angeles and EOP Architects of Lexington have come together to re-envision its future.

The redesign provides a transparent exterior for Rupp Arena and the convention center, with distinctive building identities and entrances. By making activities inside more visible, it encourages passersby to participate and links those inside to the city. The design also includes a park, plaza, and water features.

The exhibition space within the convention center will be increased by over 50% and ballroom space by over 40%. Upon completion in Spring 2022, Central Bank Center will have over 200,000 SF of flexible meeting and event space. Meantime, inside Rupp Arena — home to the University of Kentucky basketball program — the redesign includes upgrades to the upper seating bowl, approximately 50,000 SF of club space, expanded concourses and new sustainability features that will target LEED certification

Together, these buildings along with a pedestrian connection through the site that connects to downtown will create a dense, lively experience for residents and visitors alike.

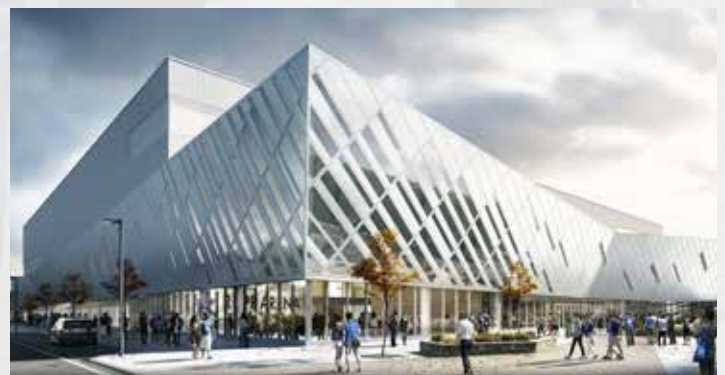
CentralBankCenter.com



02
+ MEETING ROOMS
+ PAUSE



+ BAL
+ RES



STATS AND FACILITY AT-A-GLANCE



EXHIBITION
99,444 SF



MEETING
24,116 SF



BALLROOM
24,330 SF



HOSPITALITY
50,431 SF

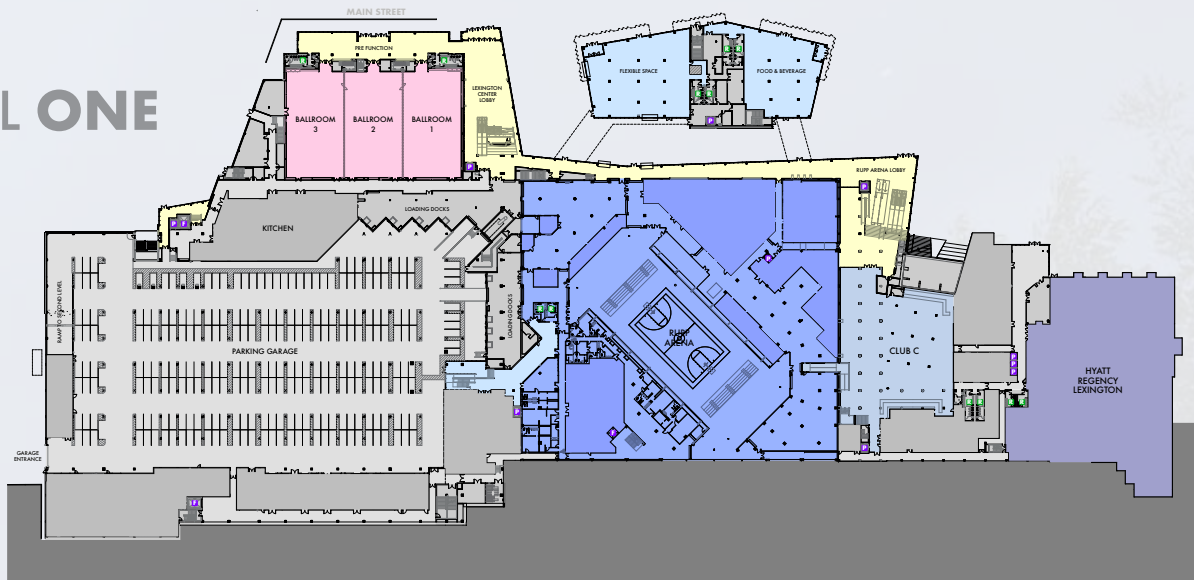


FLEXIBLE EVENT SPACE
10,890 SF

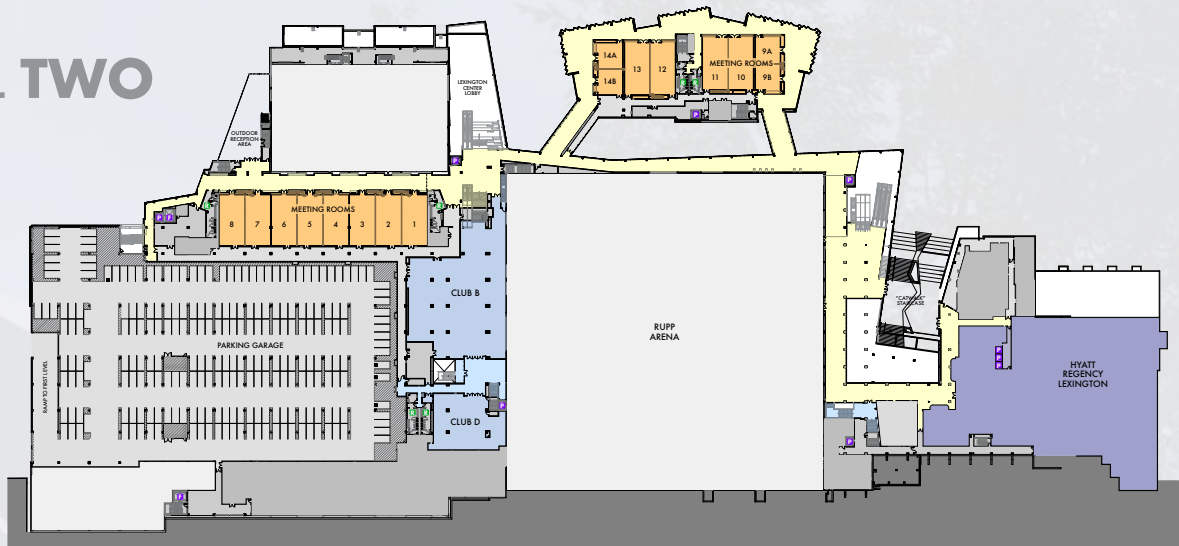
PARKING
502 COVERED SPACES
2,000 SURFACE SPACES



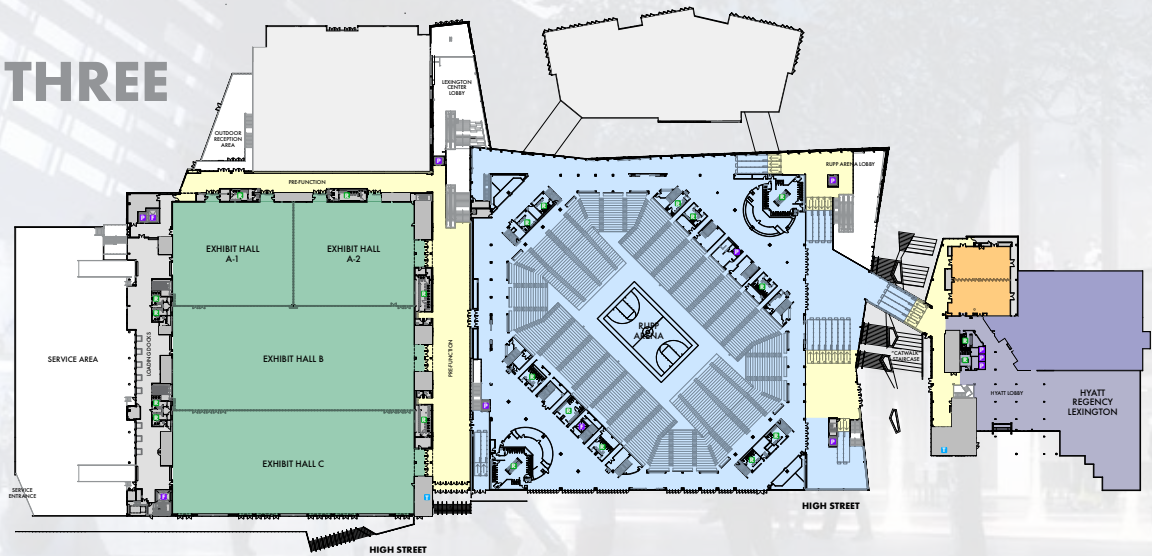
LEVEL ONE



LEVEL TWO

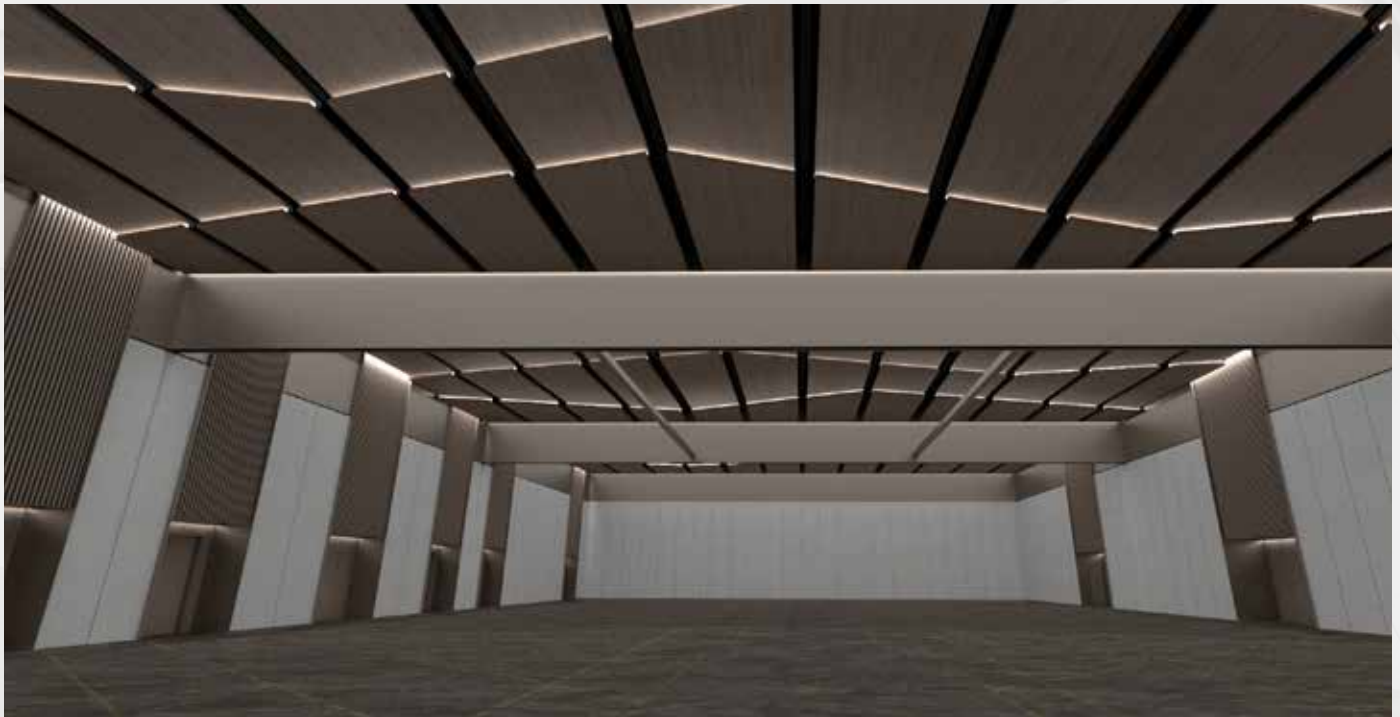


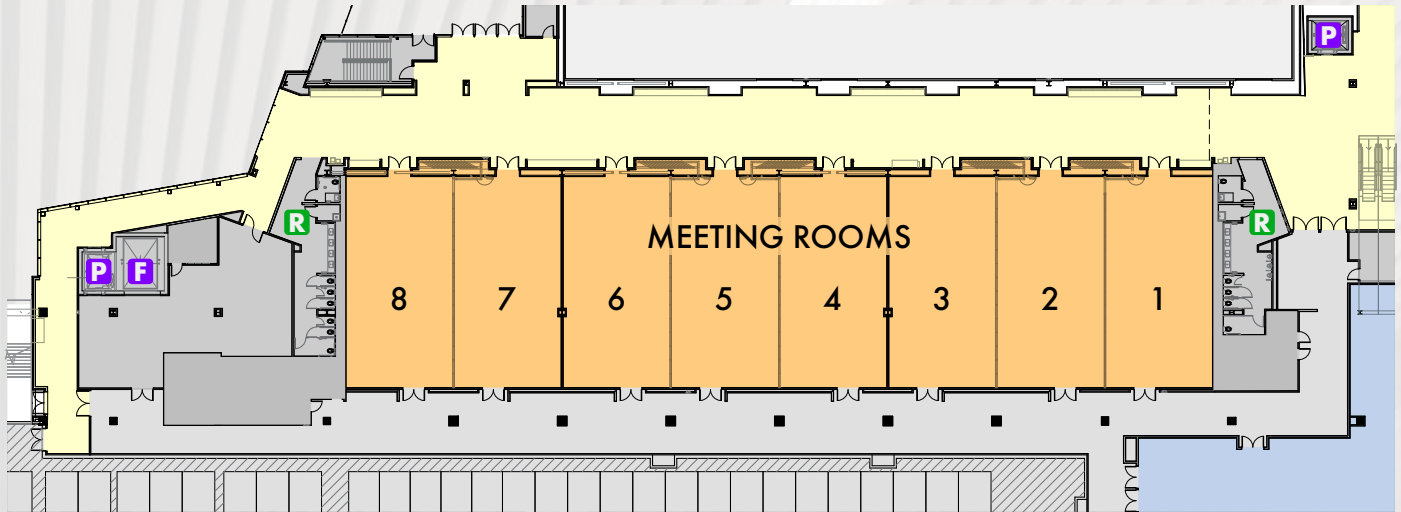
LEVEL THREE



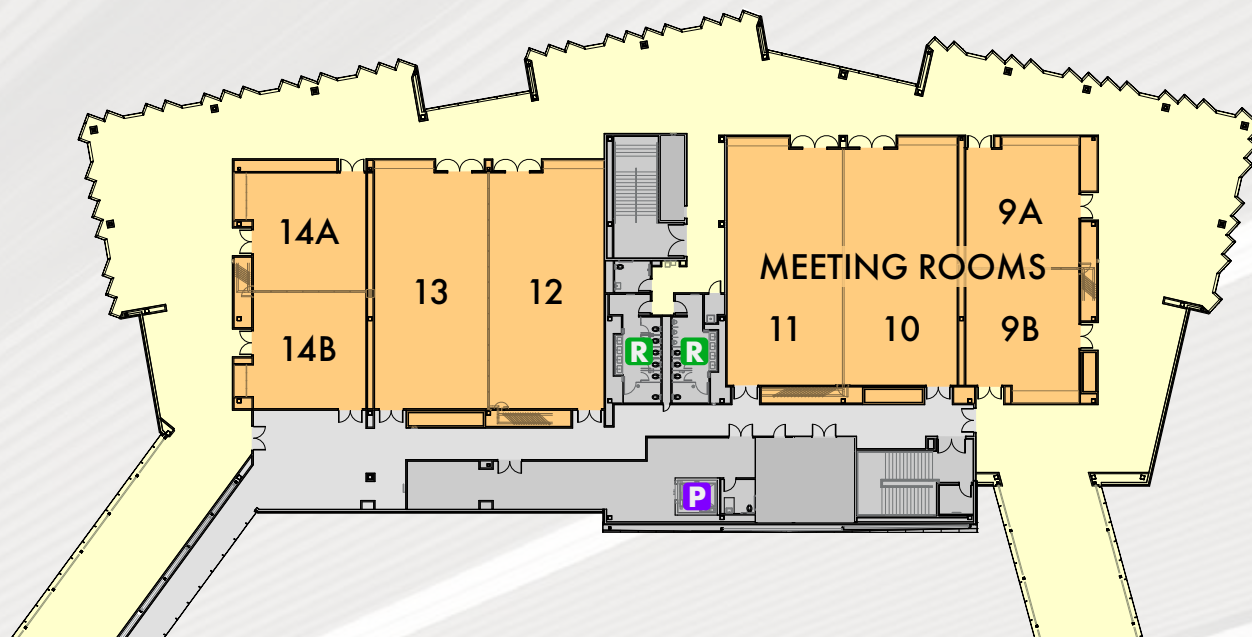


ROOM	SQUARE FEET	CEILING HEIGHT	DIMENSIONS	EXHIBITS (8 X 10)	EXHIBITS (10 X 10)	THEATRE	CLASS ROOM	BANQUET
Ballroom Prefunction	5,100	–	170' x 30'	–	–	–	–	–
Ballroom Lobby	4,500	–	98'6" x 46'	–	–	–	–	–
Ballrooms All	24,330	24'7"	200'8" x 121'3"	151	131	2,710	1,760	1,760
Ballroom 1	8,133	24'7"	66'8" x 122'	51	42	784	570	500
Ballroom 2	8,012	24'7"	66'1" x 121'3"	51	42	784	570	500
Ballroom 3	7,907	24'7"	65'10" x 121'6"	51	42	784	570	500
Ballrooms 1 & 2	16,145	24'7"	139'3" x 121'3"	100	80	1,816	970	1,080
Ballrooms 2 & 3	15,919	24'7"	132'11" x 121'3"	100	80	1,758	970	1,070

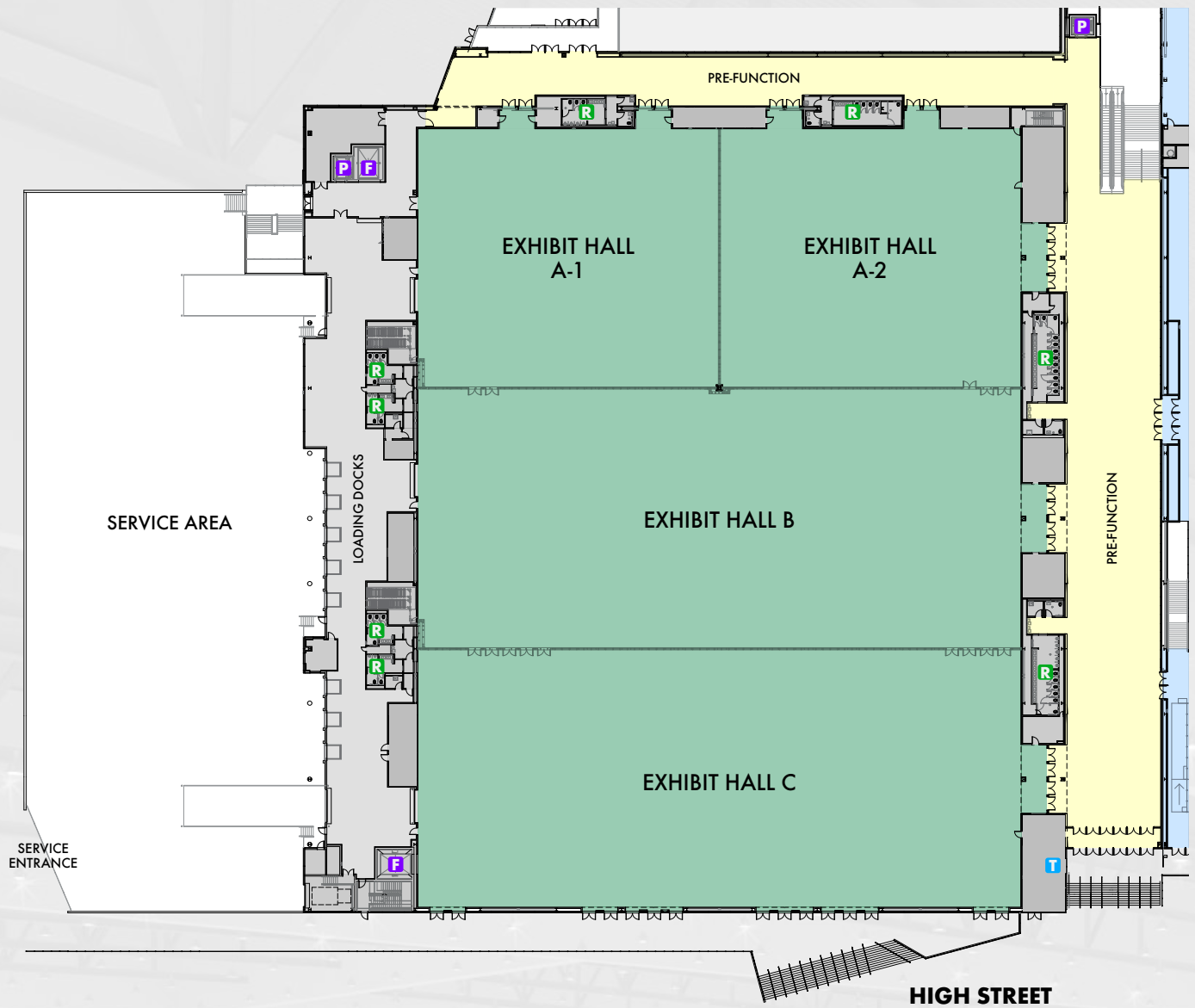




ROOM	SQUARE FEET	CEILING HEIGHT	DIMENSIONS	THEATRE	CLASS ROOM	BANQUET
Meeting Rooms 1-8 Lobby	4,369	-	257' x 17'	-	-	-
Meeting Rooms 1-3	5,212	12'7"	89' x 58'6"	664	318	360
Meeting Room 1	1,723	12'7"	29'6" x 58'6"	222	106	120
Meeting Room 2	1,723	12'7"	29'6" x 58'6"	222	106	120
Meeting Room 3	1,723	12'7"	29'6" x 58'6"	220	106	120
Meeting Rooms 1 & 2	3,480	12'7"	59'6" x 58'6"	444	212	240
Meeting Rooms 2 & 3	3,480	12'7"	59'6" x 58'6"	442	212	240
Meeting Rooms 4-6	5,212	12'7"	89' x 58'6"	664	318	360
Meeting Room 4	1,723	12'7"	29'6" x 58'6"	222	106	120
Meeting Room 5	1,723	12'7"	29'6" x 58'6"	222	106	120
Meeting Room 6	1,723	12'7"	29'6" x 58'6"	220	106	120
Meeting Rooms 4 & 5	3,480	12'7"	59'6" x 58'6"	444	212	240
Meeting Rooms 5 & 6	3,480	12'7"	59'6" x 58'6"	442	212	240
Meeting Rooms 7-8	3,480	12'7"	59'6" x 58'6"	442	212	240
Meeting Room 7	1,723	12'7"	29'6" x 58'6"	220	106	120
Meeting Room 8	1,723	12'7"	29'6" x 58'6"	222	106	120



ROOM	SQUARE FEET	CEILING HEIGHT	DIMENSIONS	THEATRE	CLASS ROOM	BANQUET
Meeting Rooms 9A-14B Lobby	7,450	14'7"	290' x 10', 74' x 19', 48' x 25'	-	-	-
Meeting Rooms 9A-9B	1,686	14'7"	28'10" x 60'	196	106	120
Meeting Room 9A	843	14'7"	28'10" x 30'	98	54	60
Meeting Room 9B	843	14'7"	28'10" x 30'	98	52	60
Meeting Rooms 10-11	3,480	14'7"	58' x 60'	448	212	200
Meeting Room 10	1,740	14'7"	29' x 60'	224	106	100
Meeting Room 11	1,740	14'7"	29' x 60'	224	106	100
Meeting Rooms 12-13	3,480	14'7"	58' x 60'	448	212	200
Meeting Room 12	1,740	14'7"	29' x 60'	224	106	100
Meeting Room 13	1,740	14'7"	29' x 60'	224	106	100
Meeting Rooms 14A-14B	1,686	14'7"	28'10" x 60'	187	110	100
Meeting Room 14A	843	14'7"	28'10" x 30'	103	55	50
Meeting Room 14B	843	14'7"	28'10" x 30'	84	55	50





ROOM	SQUARE FEET	CEILING HEIGHT	DIMENSIONS	EXHIBITS (10 X 10)	THEATRE	CLASS ROOM	BANQUET
Exhibit Hall All	99,444	30'1"	358'3" x 277'7"	552	-	-	-
Exhibit Hall A1 & A2	33,046	30'1"	119'2" x 277'7"	180	3,744	2,397	2,300
Exhibit Hall A1, A2 & B	66,261	30'1"	238'10" x 277'7"	367	-	-	4,460
Exhibit Hall B & C	66,201	30'1"	238'6" x 277'7"	370	7,400	4,794	4,600
Exhibit Hall A1	16,523	30'1"	119'2" x 138'8"	91	1,664	972	1,080
Exhibit Hall A2	16,523	30'1"	119'2" x 138'8"	91	1,664	972	1,080
Exhibit Hall B	33,215	30'1"	119'2" x 277'7"	185	3,744	2,397	2,300
Exhibit Hall C	32,986	30'1"	118'10" x 277'7"	175	3,744	2,397	2,300

RUPP ARENA[®]

at  Central Bank Center

THE GREATEST TRADITION WITH ULTIMATE FLEXIBILITY



Rupp Arena, the world renowned Basketball and entertainment venue, can be the setting for general sessions to accommodate groups ranging from 2,500 to 20,000 in attendance. Three well-appointed hospitality clubs are adjacent to the arena and can provide up to 35,000 sq feet of versatile meeting, banquet or support space for your event.



RUPP ARENA HOSPITALITY CLUBS



CENTRAL BANK CENTER CATERING PARTNER

HARDWOOD & OAK
HOSPITALITY



WELCOMING A NEW PARTNERSHIP

The Lexington Center is proud to announce
Hardwood & Oak as their new food & beverage hospitality brand!



Levy



HARDWOOD & OAK
HOSPITALITY

ONE BRAND, ONE GOAL & A UNIQUE FOOD STORY

Our collaborative approach to building a hospitality brand aims to elevate the best of our partner's organizational goals through the lens of impeccable hospitality. The brand communicates our joint dedication to delivering inclusive, welcoming hospitality and satisfying, high quality food that pays off our brand's value proposition.

Levy creates a truly unique food and hospitality experience that includes concepts, menus, and service styles with every partner. It's what we call our Food Story. It is collaboratively crafted to be the most strategic, meaningful story to engage guests and inspire our operational leaders and team members to bring something special to our guests each and every day.

CENTRAL BANK CENTER EXPOSITION SERVICES



ONE SOURCE FOR EVERYTHING.

Let us make your event planning easy.

UNSURPASSED SUPPORT SERVICES FOR YOUR EVENT

Lexpo offers support services for trade shows, conferences, conventions, corporate meetings and special events. Conveniently located right on the Central Bank Center property, Lexpo provides everything from furniture fixtures and accessories to computerized floorplans and layouts. Your turn-key source for anything and everything.

Serving Central Bank Center and off-site event locations across Central Kentucky, LEXPO Exposition Services provides all of your presentation needs, and offers a range of services for exhibitors to ensure you have the most productive tradeshow experience possible.

CentralBankCenter.com/Lexpo

FOLLOW ALONG:
CENTRALBANKCENTER.COM/EXPANSION



BOOKING INQUIRIES:
SALES@CENTRALBANKCENTER.COM

The background of the entire page is a dark, blue-tinted photograph of the Central Bank Center building at night. The building features large glass windows and a modern architectural design. In the foreground, there are silhouettes of trees and a group of people walking on a sidewalk. A large white arrow points from the bottom left towards the building.

 **Central Bank Center**

LEXINGTON, KY 40507
CENTRALBANKCENTER.COM